

Model ZW3

Winterizer Valve Assembly

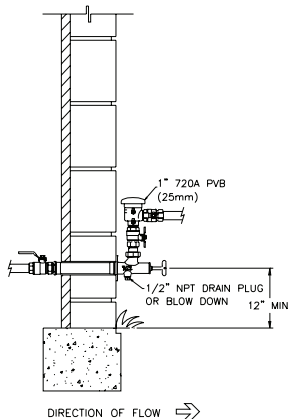


□ Installation □ Winterizing Instructions

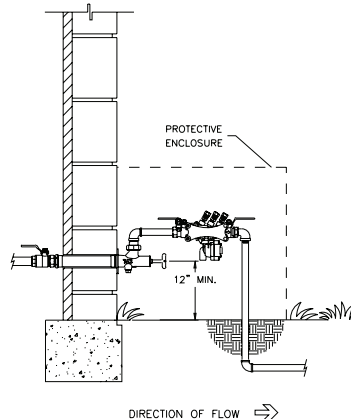
INSTALLATION INSTRUCTIONS

System Start Up

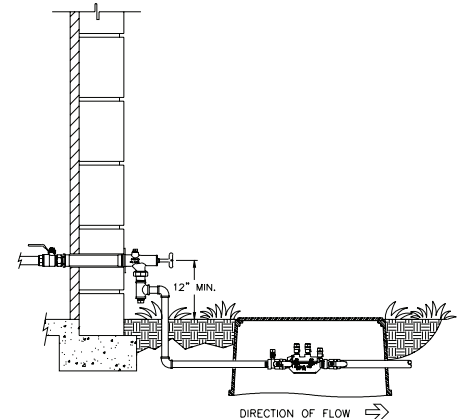
1. Drill a 2" diameter hole into the wall and insert the inlet end through the wall.
2. Connect the inlet piping to the inlet tailpiece. Allow for a ball valve or other shut off device to be on the inlet source side of the Winterizer. When using copper sweat components for the inlet connection make sure the Winterizer is fully open by turning the inlet hex with the control key fully counter clockwise until the key stops.
3. Determine the system requirements for the Winterizer.



A. If you are using a Pressure Vacuum Breaker, install the Winterizer with the outlet tailpiece facing upwards vertically.



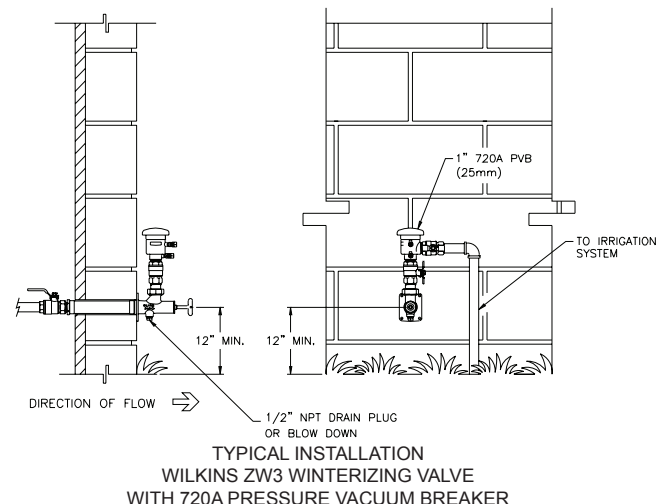
B. If you are using a Reduced Pressure Principle Backflow Preventer, install the outlet tailpiece in the vertical up position.



C. If you are using a Double Check Backflow Preventer in a meter box, install the outlet tailpiece in the vertical down position.

4. Secure the Winterizer to the wall using the cast baseplate on the unit.
Suggested size of the fasteners is 1/4 inch diameter at 4 each for fastening the corners of baseplate.
5. Close the Winterizer with the control key by turning the key clockwise.
6. Turn on the inlet supply shut-off valve to the Winterizer.
7. Slowly open the Winterizer with the control key and flush the system of any debris.
Make sure that the Winterizer is fully open until the key stops.

Note: The Winterizer is not designed to be a throttling control valve. It should be either fully open or fully closed.



WARNING: This product contains a chemical known to the State of California to cause cancer, birth defects and other reproductive harm

ADVERTENCIA: Este producto contiene una sustancia química que el Estado de California como causante de cáncer, defectos de nacimiento y otros daños reproductivos

WARNING: This product is NOT Lead Free in accordance with U.S. Federal Law and is illegal in the U.S. for use in potable services or to install in water systems anticipated for human consumption.



ZURN WILKINS

1747 Commerce Way, Paso Robles, CA 93446 Phone: 855-663-9876 Fax: 805-238-5766